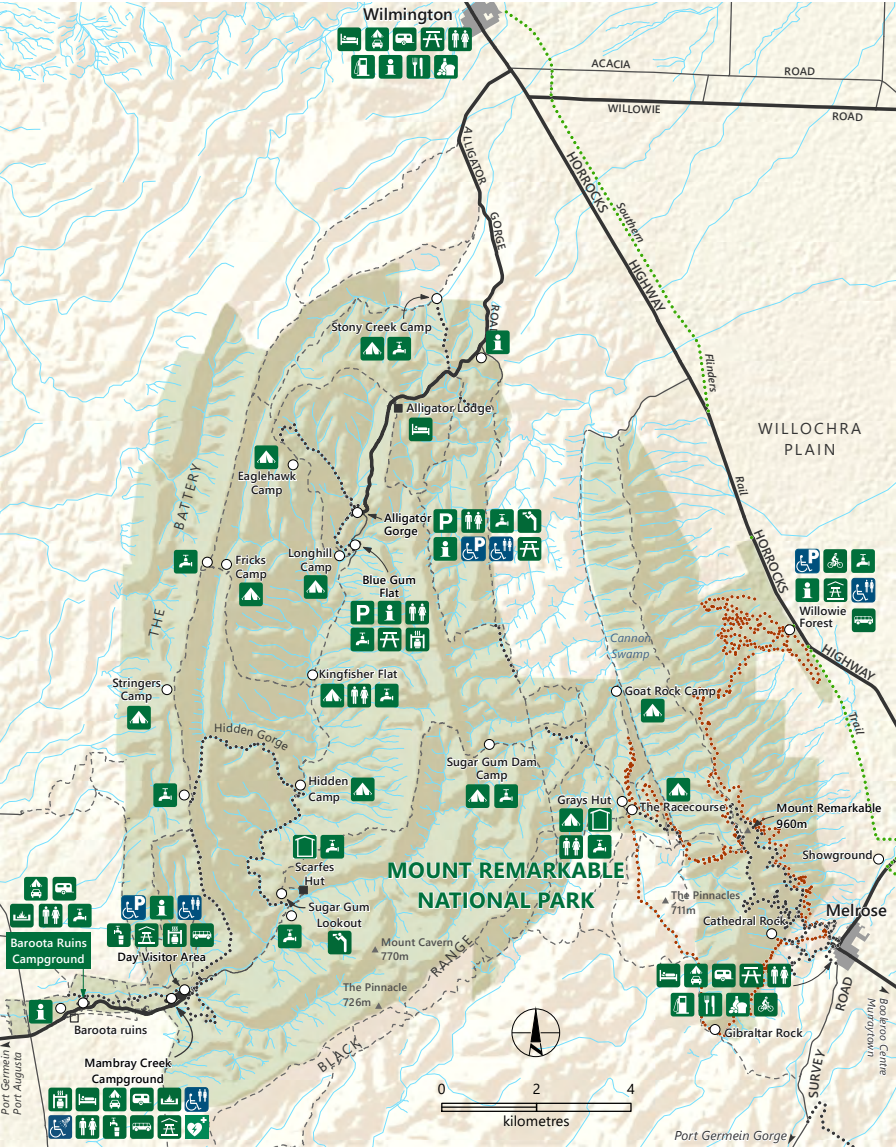
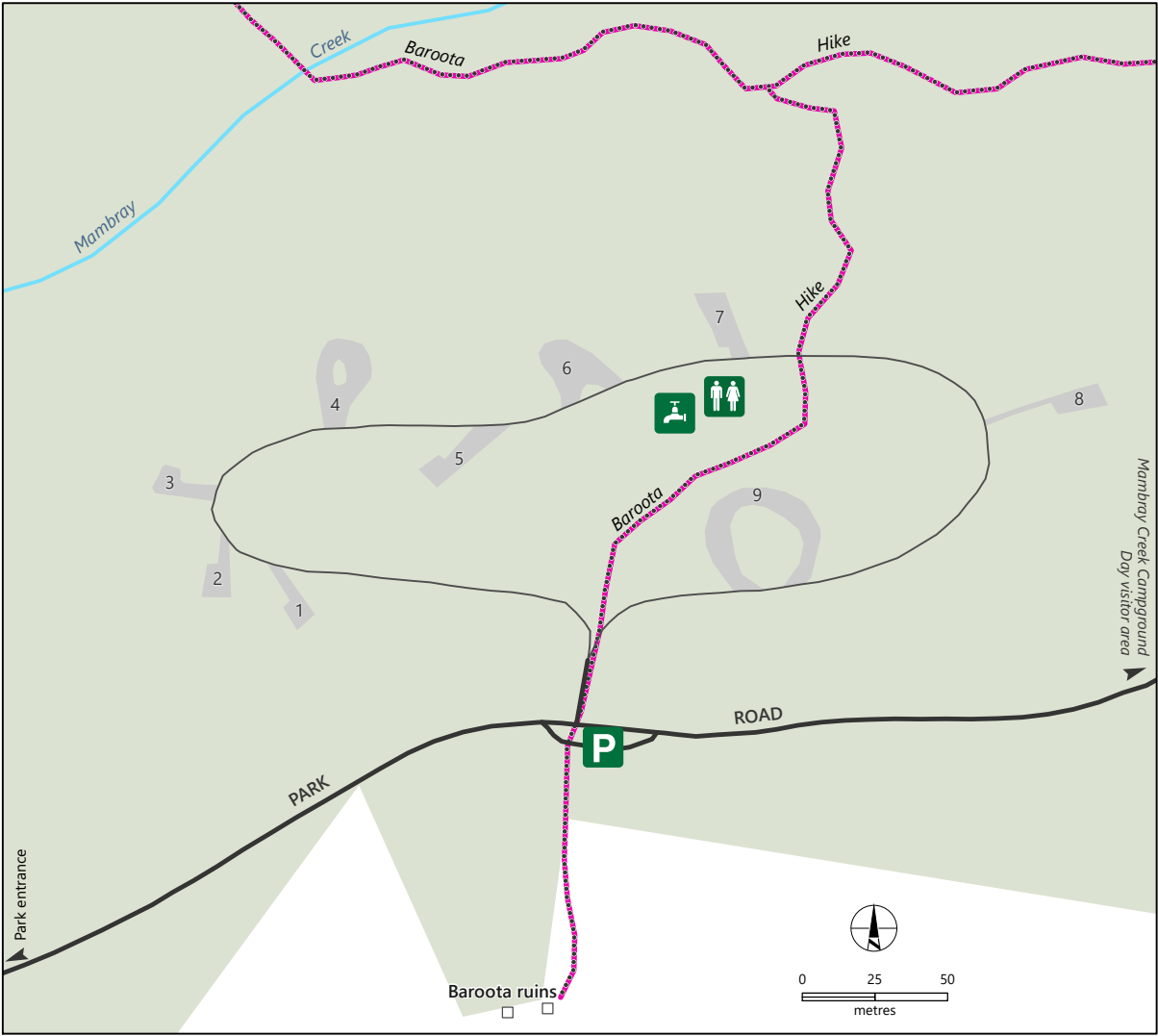



Mount Remarkable National Park



Baroota Ruins Campground





Sealed road

Unsealed road

Track (Authorised vehicles only)

Cycling trail

Walking trail

Shared use trail

Mount Remarkable National Park

Watercourse

Campsite and number

Peak

Automated external defibrillator

Accessible parking

Accessible showers

Accessible toilets

Accommodation

Barbecue

Bus parking

Bush camping

Bike trails

Caravan sites

Camp fire

Campground

Disabled access

Drinking water

Fuel

Hut

Information

Lookout

Meals

Parking

Picnic shelter

Picnic table

Rainwater

Supplies

Toilets

DEW does not guarantee that this map is error free. Use of the map is at the user's sole risk and the information contained on the map may be subject to change without notice. Cartography by DEW, Mapland - 2023

[Book online at parks.sa.gov.au](https://parks.sa.gov.au)

[Get the Avenza Maps app to use park maps on your phone.](#)

For more information, contact:
Department for Environment and Water
E: parks@sa.gov.au
P: 08 8207 7700