


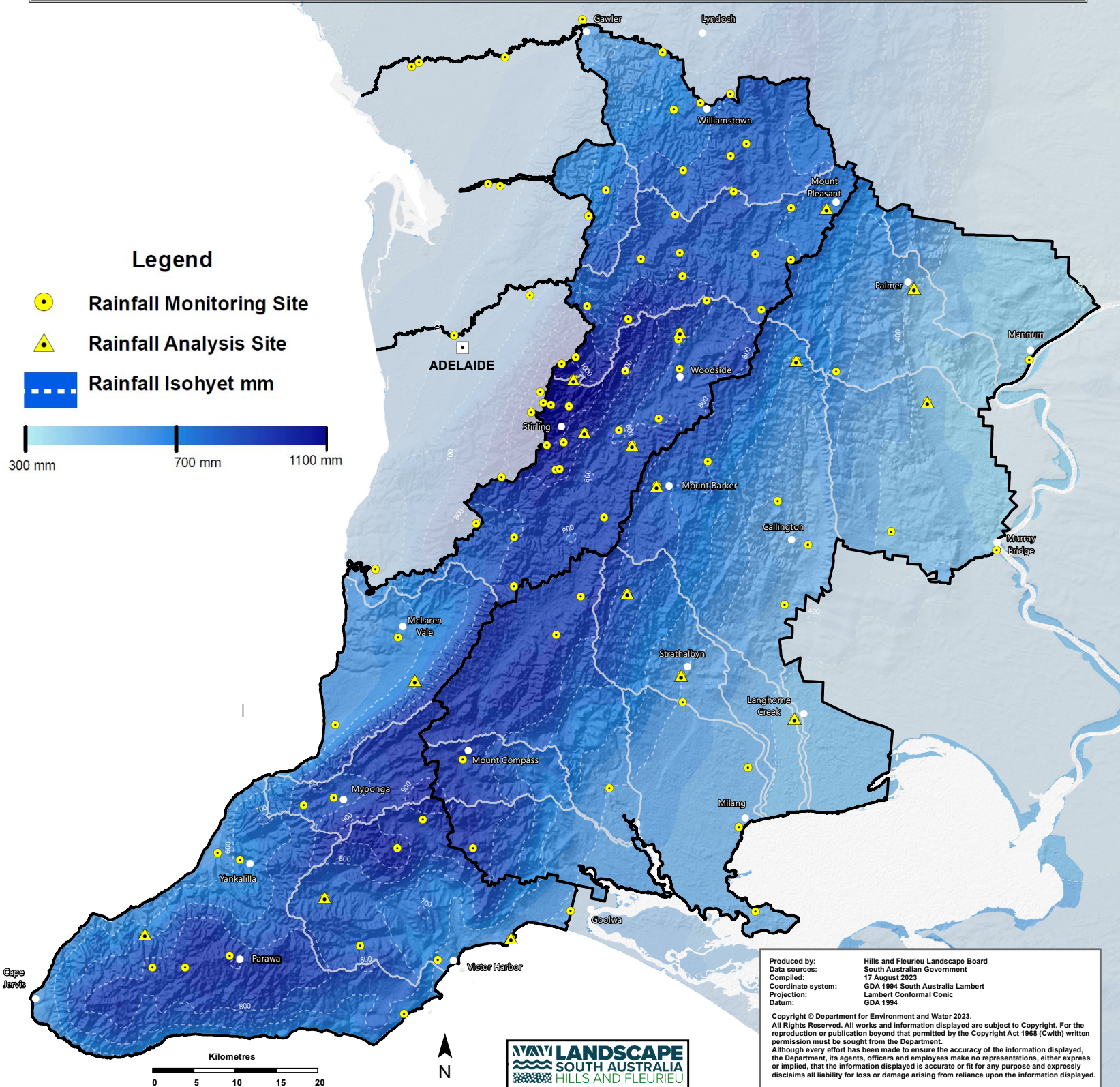
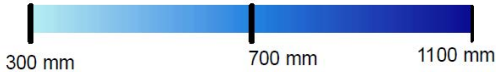


Rainfall Monitoring in the Eastern and Western Mount Lofty Ranges

2023 Water Allocation Plan Evaluations

Legend

-  Rainfall Monitoring Site
-  Rainfall Analysis Site
-  Rainfall Isohyet mm



Produced by: Hills and Fleurieu Landscape Board
Data sources: South Australian Government
Compiled: 17 August 2023
Coordinate system: GDA 1994 South Australia Lambert
Projection: Lambert Conformal Conic
Datum: GDA 1994

Copyright © Department for Environment and Water 2023.
All Rights Reserved. All works and information displayed are subject to Copyright. For the reproduction or publication beyond that permitted by the Copyright Act 1968 (Cwth) written permission must be sought from the Department.
Although every effort has been made to ensure the accuracy of the information displayed, the Department, its agents, officers and employees make no representations, either express or implied, that the information displayed is accurate or fit for any purpose and expressly disclaims all liability for loss or damage arising from reliance upon the information displayed.

